



downtown stays

By In Residence Editorial Team

STYLISH SUMMER PLACES IN BANGKOK

Thailand is not only a centre of new residential developments, but also a centre of the hotel and resort business. The country has a smorgasbord of first-rate and five-star hotel chains nationwide, while the hospitality service that the country is famous for has helped to bring phenomenal growth to the industry.



Dreamy Sleepover

Dream Hotel has 100 guest rooms divided into five categories: Classic Rooms, Deluxe Rooms, Junior Suites, Deluxe Suites and Suite Dream, which has a spacious living area and small kitchen. Our room was a Junior Suite, marvellously equipped with plasma TV, iPod, DVD player, high-speed and WiFi Internet connection, fully-stocked mini bar, comfortable mattress and other complimentary necessities. Chic and trendy, the suite exudes an ethereal blue tone to help you sleep tight. The hotel's "East meets West" feel is enhanced via an eclectic blend of fantasy, cutting-edge design and technology, with Thai hand-made furniture, pagodas and other decorative Thai motifs in the lobby.

Dream Hotel Bangkok, 10 Sukhumvit Soi 15, Sukhumvit Road, Bangkok. Tel: +66 (0) 2254-8500; Internet: www.dreambkk.com




62
IN RESIDENCE
April 2012

A Wow Experience

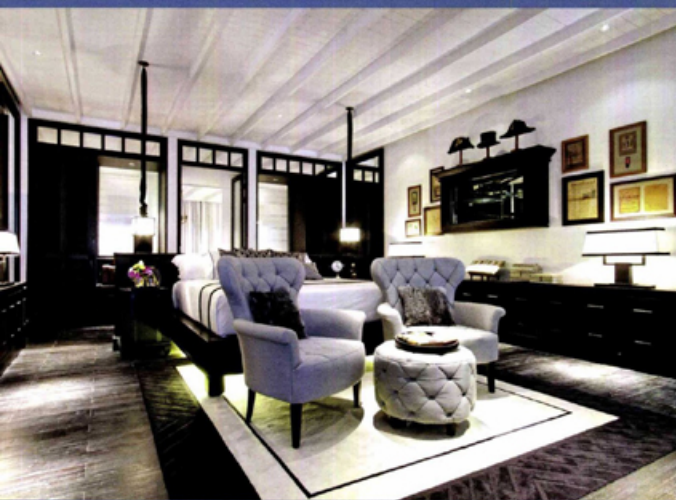
WOW Bangkok is a small boutique hotel in the Sukhumvit area, a perfect place for lovers of privacy who also enjoy vibrant city life. The interior design is inspired by Thai culture and legend. Thai contemporary art adorns every nook, from the splendid lobby to each uniquely designed room. In every delicately crafted piece of decor and furnishing, the hotel displays a beautiful touch and a delightfully immediate sense of inspiration.

*WOW Bangkok Hotel, 3/16 Soi Sukhumvit 31
(Sawasdee 1), Sukhumvit Road, Bangkok.
Tel: +66 (0) 2260-3560;
Internet: www.wowbangkokhotel.com.*



In Bangkok, big players - both local and foreign - have been exploring growth prospects in the hospitality business with giant investments bringing a great influx of well-recognised hotels and resorts. Small, stylish "boutique" hotels and resorts are also tempting elite groups of investors to venture into design-led small luxury hotels where personalised service is a top priority.

We spent the best part of last month roaming the central business districts of Bangkok seeking out small and stylish hotels with an emphasis on reputation and well-designed accommodations. This line-up of boutique hotels and resorts offers unique personalities, cutting-edge design and stylish living. All make great choices for a summer break in Bangkok.



A Loft In Style

Mid-range hotels are a popular option for modern leisure travellers who seek quality accommodation at reasonable and affordable prices. The first Aloft in Thailand, under the management of Starwood Hotels and Resorts Worldwide, is now open for travellers seeking a unique and fun experience.

With urban-inspired design, Aloft guest rooms feature loft-like décor with soaring, nine-foot ceilings, Aloft's signature platform beds, oversized showerheads and Bliss® Spa products. To maximise both work and play, each room offers free Wi-Fi and a plug 'n' play connectivity station for charging and syncing all electronic devices with the 42-inch LCD HDTV.

Aloft is the first hotel in Thailand to introduce Fingi, which is the latest in hospitality technology. Fingi is a hand-held device with a touch-screen interface that is given to guests upon check-in allowing them to control all the technological aspects of their stay from check-in to check-out. The device also functions as a room key and once inside the room, the device enables guests to set the mood and comfort level with lighting and temperature controls that interact with the electrical systems in the room. The device is also the remote control for the television and stereo, with the ability to preview and select channels and purchase movies.

*Aloft Bangkok, 35 Sukhumvit Soi 11, Sukhumvit Road, Bangkok.
Tel: +66 (0) 2207-7000; Internet: www.starwoodhotels.com/Aloft*



Musing On Prestigious Living

Hotel Muse Bangkok Langsuan is the newest member of the MGallery collection of unique hotels. The hotel has been created to respond to discerning travellers and business people, offering a sophisticated lifestyle in the metropolis. Rising high above one of the city's most prominent residential districts, Hotel Muse Bangkok Langsuan brings a new type of accommodation inspired by the golden age of travel and the most opulent of arts and design.

*Muse Langsuan Hotel, 55/555 Langsuan Road,
Lumpini, Bangkok.
Tel: +66 (0) 2630-4000.
Internet: www.hotelmusebangkok.com*

A Step Back In Time

A much-awaited, stylish hotel offering a combination of the modern Thailand and the past. Slated to open in June, The Siam has been conceived by creative director and celebrity Krissada "Noi" Sukosol Clapp, together with globally acclaimed architect and interior/landscape designer Bill Bensley. To ensure impressive and personalised service, the hotel takes on a less is more approach. Featuring 39 of the capital's most spacious rooms, each is outfitted with plush furnishings, super-sized beds, lofty ceilings and turn-of-the-century oriental artworks and antiques. To give guests a touch of classical Siam, each room is staffed with a personal butler. The overall setting reflects the period of Bangkok's finest grandeur, under King Rama V (circa 1853-1910), with Art Deco accents. The muted colour scheme of black, white, cream, grey and neutrals combines with natural textures such as wood, textiles, leather and stone. This is not to mention the sprawling garden and verdant shrubbery throughout.

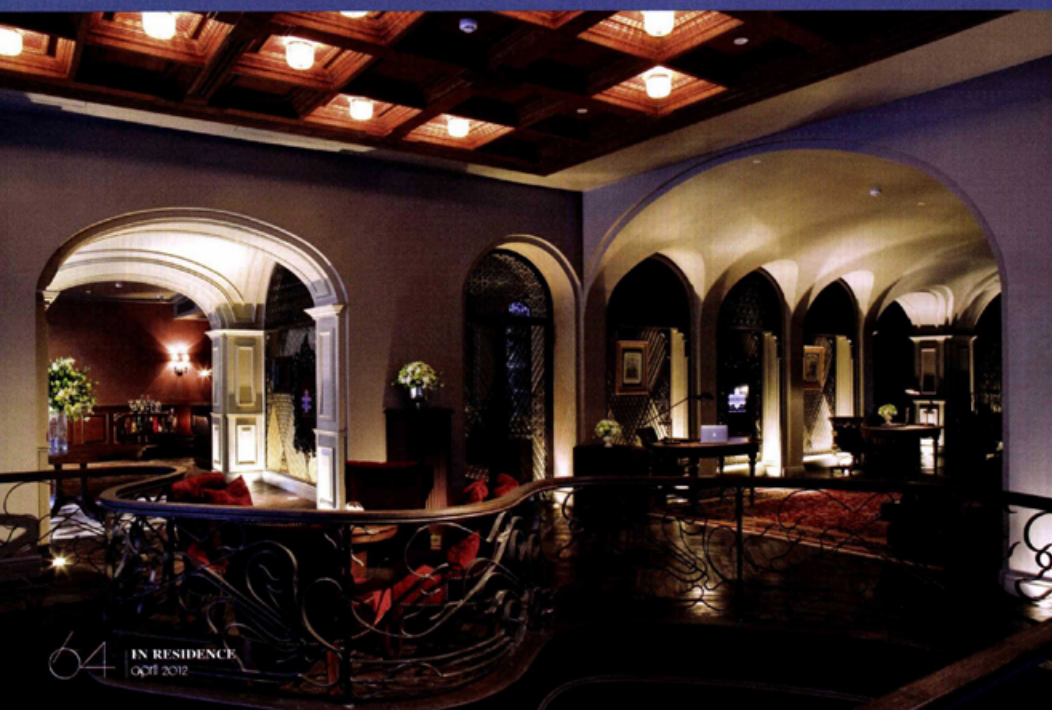
*The Siam, 3/2 Thanon Khao, Dusit, Bangkok.
Tel +66 (0) 2241-8755. www.thesiamhotel.com*



Vivacity And Comfort

Viva Garden Sukhumvit by Bliston is centrally located and close to Bangchak skytrain station (BTS), convention and exhibition centres and industrial areas. This is an exclusive serviced residence perfect for both business travellers and families seeking convenience and comfort. It boasts 111 spacious apartments with a choice of studios or one- or two-bedroom apartments. There's a 24-hour front desk and security, CCTV surveillance, daily maid service, a variety of facilities and services. Spacious bedrooms, en suite bathroom, well-equipped kitchenette, high-speed Internet access, home entertainment system, in-room washing machine and personal balcony provide all you need in this home away from home.

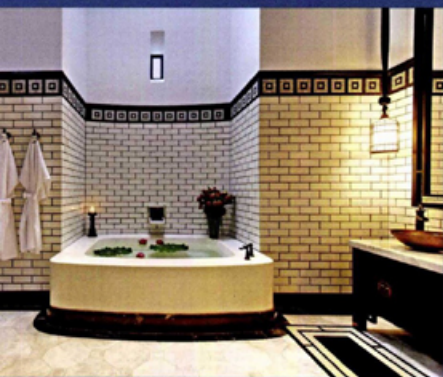
Viva Garden by Bliston, 1988 Sukhumvit 60/1 Sukhumvit Road, Phraeknong, Bangkok. Tel: +66 (0) 2741-5888; Internet: www.viva-garden.com.



Japanese Prestige

Japanese style is enduring in Thailand, from cuisine to design, technology, art and culture. The latest development in Japanese popularity is Japanese hotels and resorts and one of the most anticipated Japanese hotels in Bangkok is The Okura Prestige Bangkok, a 240-room luxury hotel covering 34 floors of the iconic Park Ventures Ecoplex in central Bangkok, directly connected to Ploenchit skytrain station. The hotel harmonises Japanese and Thai cultures and features cutting-edge facilities such as a cantilevered outdoor swimming pool, premium spa and an extensive range of dining venues that includes the much-acclaimed Yamazato Japanese restaurant. The hotel is perfectly balanced between Thai and Japanese culture, based on the original principle of hospitality, stressing calmness and comfort to ensure that guests will have an enjoyable stay.

The Okura Prestige Bangkok, 57 Wireless Road, Bangkok. Tel: +66 (0) 2687-9000; Internet: www.okurabangkok.com.



A Surprising Namesake

It was a total surprise a couple of months ago when we heard that there is a boutique hotel named In Residence. However, it has no connection with our magazine, except that it's an obvious inclusion in any feature on luxury boutique hotels. In Residence Sukhumvit is a stylish new boutique hotel offering a choice of accommodation and exceptional value for money. The 54 guest rooms include laptop-compatible safes, mini bar, television equipped with complimentary Internet TV access, desks, complimentary newspaper, phone, high-speed wireless Internet access and separate living rooms along with single sofa beds. All units have kitchenettes with full-sized refrigerators/freezers, microwave, separate dining area and coffee/tea maker. It's also suitable for MICE and business travellers, with amenities including a business centre and secretarial services.

In Residence Bangkok Sukhumvit, 23/2 Sukhumvit 13, Sukhumvit Road, Bangkok. Tel: +66 (0) 2645-4899; Internet www.inresidencebangkok.com.



Living With Modern Art

Siam@Siam Design Hotel & Spa is eclectic, chic and contemporary, exuding the feeling of an art gallery, especially in its stunning reception area. The concept of the hotel is to distance itself from the regular mantra of luxury and elegance. All suites are artistically dark-toned and inspired by nature, with subtle art pieces and wood furnishings to bring a feeling of warmth. The outstanding decorative features include rattan, climbing palms and numerous wooden "jigsaw pieces" placed in disordered style on the ceilings. The cheerful and friendly staff are also an important ingredient in creating an atmosphere of natural warmth.

Siam@Siam Design Hotel & Spa, 865 Rama 1 Road (Opposite National Stadium), Bangkok. Tel: +66 (0) 2217-3000; Internet: www.siamatsiam.com.



Calling For An Encore

Ramada Encore Bangkok at Sukhumvit Soi 10 is the new sister in the Ramada chain. Its great location allows easy access to all major tourist and business hot spots in the heart of Bangkok. The new hotel boasts personalised service and a fresh and innovative approach. When it comes to dining, Leapfrog Restaurant is a daringly different rooftop concept offering excitement and views along with mouth-watering food and drinks. Ramada Encore Bangkok has been created as a "hub away from home" and perfectly accommodates the needs of today's business travellers.

Ramada Encore Bangkok, 21 Sukhumvit Soi 10, Sukhumvit Road, Bangkok. Tel: +66 (0) 2615-0999; Internet: www.ramadaencorebangkok.com.

